

# CEW MODEL



**3-PASS, FIRETUBE WETBACK BOILER/BURNER PACKAGE**

### Three-Pass Wetback Package

- 125–350 Horsepower
- 30 or 125 psig Hot Water
- 15 or 250 psig Steam
- Natural Gas, No. 2 oil or combination
- No. 2 oil pressure atomized 125-200 hp;  
air atomized 250-350 hp
- Full Modulation



### Standard Equipment

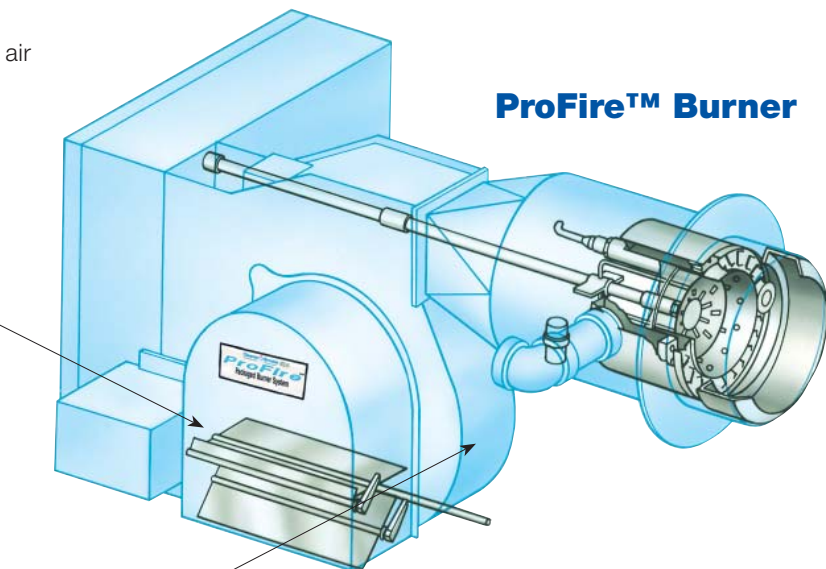
- **Steam/Water Pressure Gauge**
- **Steam Pressure or Hot Water Controls**
- **Water Column/Feedwater Pump Control**  
Complete with gauge glass set and water column  
blowdown valves.
- **Low Water Cut-off**  
Auxiliary low water cut-off on steam boilers.
- **Safety Relief Valve(s) Per ASME Code**
- **Control Panel and Flame Safeguard Control**  
Microprocessor based burner management  
control system designed to provide proper burner  
sequencing, ignition and flame monitoring protection.
- **ASME Pressure Vessel**  
Five square feet of heating surface per boiler  
horsepower.
- **Boiler/Burner Package UL/cUL Approved**  
All sizes.
- **Davited Front and Rear Doors**  
Ease of access and maintenance.
- **Forced Draft Burner**  
Reliable, predictable and repeatable combustion  
performance. C-B manufactured, and custom  
mounted to each size vessel for superior  
performance.
- **Encased, Insulated Shell**  
Factory installed steel jacket encased over 2-inch  
insulation covers the boiler shell.

## Model CEW from Cleaver-Brooks

- The Cleaver-Brooks CEW ProFire boiler line provides reliable, hot water or high quality steam, utilizing an economical boiler/burner design.
- The CEW incorporates a 3-pass wetback firetube design constructed to ASME Code and packaged with a forced draft burner. The burner/boiler package means integrated performance, operation and ease of maintenance.
- All CEW boilers are pre-wired, factory tested and UL/cUL Approved, providing you with the quality you expect from Cleaver-Brooks.

### Proportional Air Flow Ensures:

- Low excess air capability
- Low CO performance
- Ease of combustion set-up with unique air damper design
- Full modulation



### Reverse Curve Fan Offers:

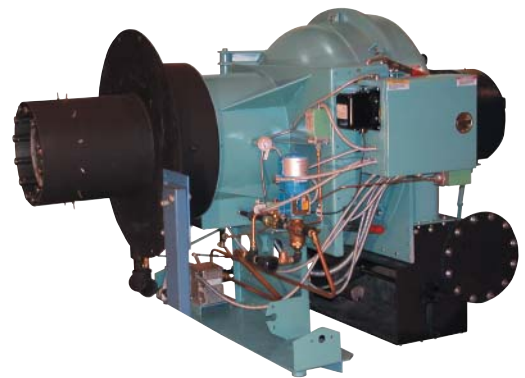
- Low fan motor hp requirements
- Self-cleaning for lower maintenance costs
- High pressure fan provides greater resistance to stack draft fluctuations
- Quieter operation

## Pressure Vessel Features

- Steam dry pan improves steam quality.
- ASME pressure vessel constructed of quality steel and all welded construction. X-rayed and stress relieved on all high pressure boilers in accordance with the ASME Code.
- Large furnace volume with low heat release provides more primary heating surface.
- Pressure vessel design provides excellent water circulation and easier cleaning.
- Handholes and manways strategically placed for easy inspection and maintenance.

## Ready for Quick, Simple Installation

- Totally enclosed and pre-wired control panel contains high quality electronic programming flame failure safety controls. Conveniently mounted on the CEW ProFire, operating controls, limits and motor wiring are complete and ready for electric service to be connected to the unit for operation.
- Heavy structural steel base distributes weight evenly on the boiler room floor, and no special pad is required.
- Lifting lugs positioned to facilitate ease of handling.



800-250-5883 • [info@cleaver-brooks.com](mailto:info@cleaver-brooks.com)  
[www.cleaver-brooks.com](http://www.cleaver-brooks.com)